

## Application Scenarios of Equine PCR Testing:

### 1.Disease diagnosis:

qPCR can be used to detect whether equine are infected with specific diseases, such as herpes virus, influenza virus, etc. By detecting the DNA or RNA of the pathogen, it can be determined whether the equine is suffering from a certain disease, so that appropriate treatment and preventive measures can be taken.

### 2.Genetic testing:

qPCR can be used to detect the presence or expression levels of specific genes in the equine genome. This is useful for studying genetic traits, disease susceptibility, etc. in equine.

### 3.Environmental monitoring:

In some situations, such as investigating the distribution of wild horse populations or studying parasites in equine feces, qPCR can be used to detect equine DNA in the environment, thereby helping researchers understand the distribution, abundance and health of equine.

### 4.Racing institutions and breeding centers for luxury equine:

Real-time monitoring of the health conditions of luxury equine in racing institutions and breeding centers.

## Tets Pan el

Categories	Test Item	Package (Including 24 pre-filled extraction kits and 24 qPCR detection kit )
Equine	Equine Arteritis Virus (EAV)	24T/Kit
Equine	Herpesvirus Type 1 (EHV-1)	24T/Kit
Equine	Herpesvirus Type 4 (EHV-4)	24T/Kit
Equine	Equine Infectious Anemia Virus (EIAV)	24T/Kit
Equine	Equine Influenza A Virus H3N8 (Influenza H3N8)	24T/Kit
Equine	Salmonella spp.	24T/Kit
Equine	Streptococcus equi	24T/Kit
Equine	T. equigenitalis	24T/Kit
Equine	Theileria equi	24T/Kit
Equine	African Horse Sickness (AHSV)	24T/Kit
Equine	*A. phagocytophilum	24T/Kit
Equine	*Herpesvirus Type 3 (EHV-3)	24T/Kit
Equine	*Lepto-lipL32	24T/Kit
Equine	*Pseudomonas aeruginosa	24T/Kit
Equine	*Rotavirus A	24T/Kit
Equine	*Japanese Encephalitis (JEV)	24T/Kit
Equine	*Dourine/Trypanosoma Equiperdum	24T/Kit
Equine	*Hendra Virus (HeV)	24T/Kit
Equine	*West Nile Fever (WNV)	24T/Kit
Equine	*Nipah Virus (NiV)	24T/Kit
Equine	*Vesicular Stomatitis (VS)	24T/Kit
Equine	*Western Equine Encephalitis Virus (WEE)	24T/Kit
Equine	*Eastern Equine Encephalitis Virus (EEE)	24T/Kit
Equine	*Venezuelan Equine Encephalitis Virus (VEE)	24T/Kit

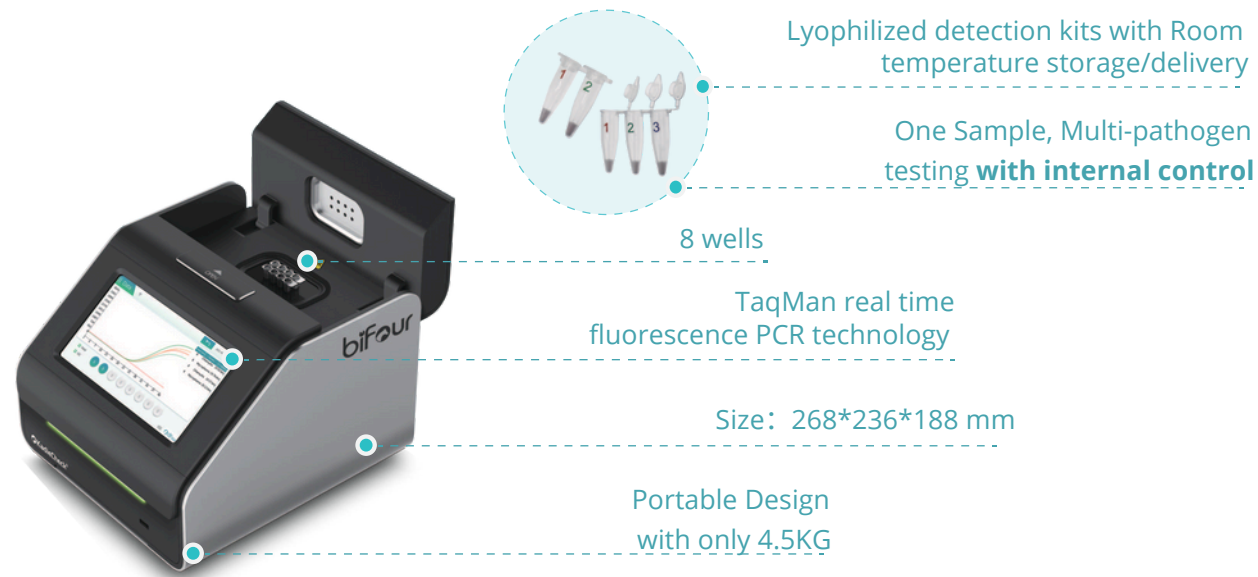


**KadieCheck®**

**Innovative On-site Real-time  
qPCR System for Equine**



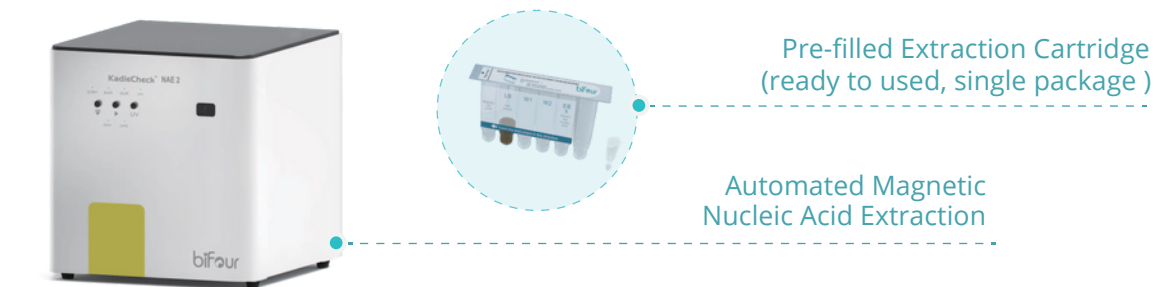
## KadieCheck® Taqman Real Time Fluorescence qPCR



### (qPCR System)

- ★ Technical Principle: Taqman qPCR
- ★ Sample well: 8, maximum 16 pathogens can be detected together
- ★ Test Time : 40-60mins
- ★ LOD: 100-1000 copies/mL

## KadieCheck® Automated Magnetic Nucleic Acid Extraction

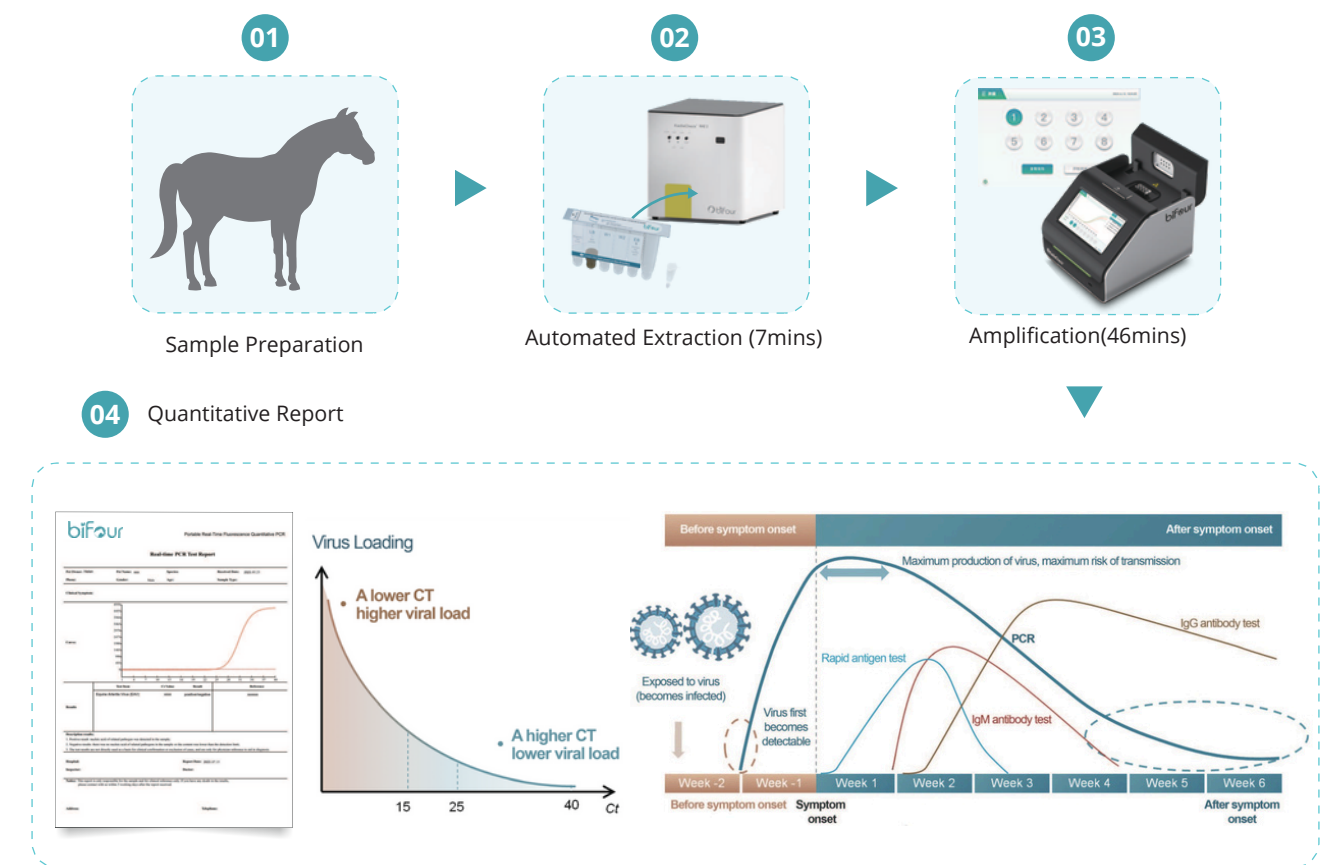


### NAE2 Plus Automatic Extractor

- ★ Technical Principle: Magnetic bead method
- ★ Workload: 4 samples
- ★ Extraction Duration: ≤7 mins



## KadieCheck® qPCR system Test Process (Sample to result within 60mins)



### Best Accuracy

KadieCheck® qPCR can detect even low levels of DNA or RNA in a sample, making it an ideal tool for detecting early stage infections or diseases even before the symptoms onset.



### Quantification

KadieCheck® systems can accurately measure the amount of DNA or RNA present in a sample, providing information on the severity of the disease or infection. This is especially useful for monitoring disease progression and treatment efficacy, which can save money by allowing for more targeted and effective treatments.



### Speed and Efficiency

KadieCheck PCR is a super easy real-time qPCR system which can run PCR test on a small table but not in a special operation room. Getting gold standard result within 1 hour, eliminates the pain point of waiting for several days to get report from third-party.



### Gold standard

KadieCheck® qPCR uses a combination of magnetic nucleic acid extraction (MNAE) and Taqman qPCR technology; Taqman qPCR technology is widely recognized as one of the gold standards for pathogen detection and confirmation.